

Arch Bar Frame Bogie

Contents

- 4 of cast metal side frame.
- 2 of cast metal stretcher.
- 8 of turned brass axle bush.
- 4 of M3 x 12mm brass CSK screws.
- 4 of M3 brass nut.
- 4 of axle/wheel assembly.

Assembly

The castings should be cleaned up with a sharp knife and small file.

Using the M3 x12mm brass countersunk screws and nuts provided, bolt the side frames to the stretchers.

The bogie frames can now be painted as required.

When dry, remove one side frame from each bogie.

Fit the brass axle bushes into the sockets on the inside of the side frames – they can be glued in if preferred.

Insert wheel sets into the axle bushes then re-attach the second side frame.

Place assembled bogie on a flat surface and check that all wheels are in contact. If not, the frames can be gently twisted by hand until all is square.

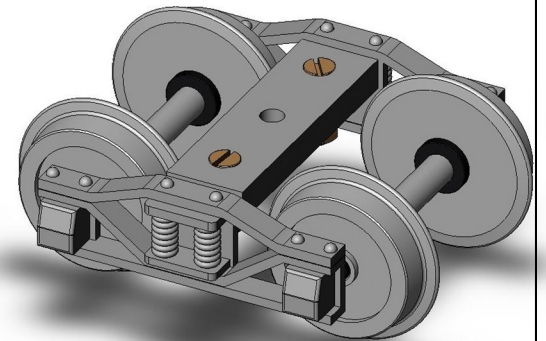
**Kit for one pair of 32mm gauge
arch bar framed bogies, including
insulated disc wheels.**

**40mm wheelbase
24.5mm diameter wheels.**

**Roundhouse Engineering Co. Ltd.
Units 6 - 9 Churchill Business Park,
Churchill Road
Wheatley
Doncaster
DN1 2TF
ENGLAND
tel: 01302 328035
Fax: 01302 761312
E-mail—mail@roundhouse-eng.com
www.roundhouse-eng.com**



Living Steam Railways



RSB3

**Arch Bar Framed Bogies
32mm gauge**